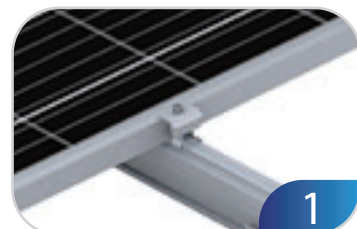
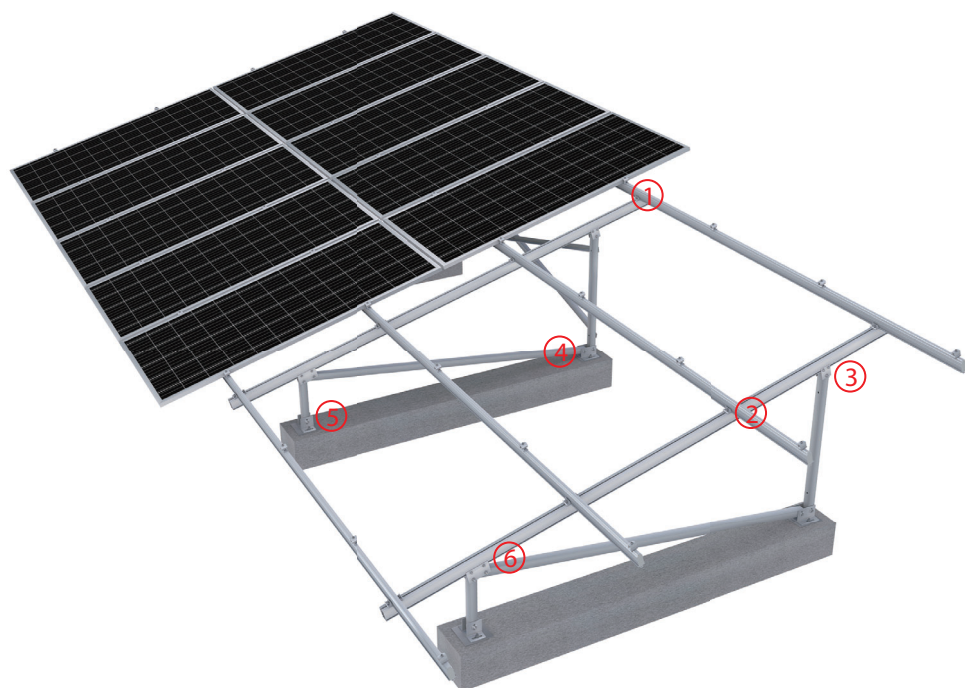


TERRA AL ALUMINUM GROUND MOUNT

Terra AL ground mount solar system combines efficiency and durability with factory preassembly and premium all-aluminum construction, offering exceptional value for commercial and utility-scale projects. It reduces on-site labor while ensuring precise array alignment on challenging terrains. Its lightweight yet robust design is ideal for large-scale installations, providing strength and ease of handling. With thousands of successful global installations, the Terra AL system demonstrates outstanding performance across diverse environmental conditions.

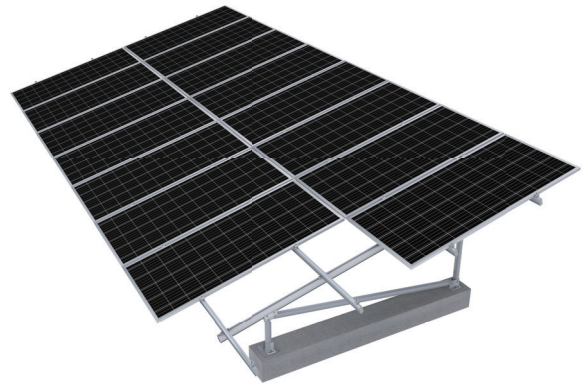


PRODUCT FEATURES

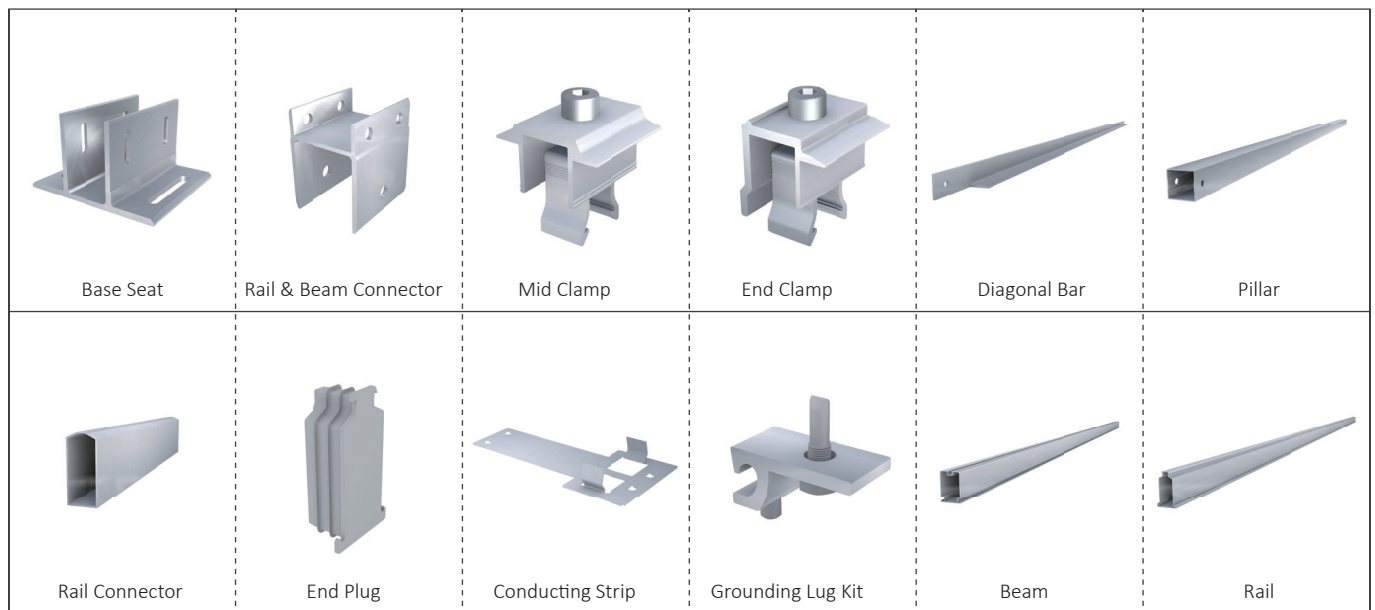
- 1. Quick Installation** — Factory pre-assembly dramatically reduces field labor requirements and accelerates project completion timelines.
- 2. Premium Aluminum Made** — Lightweight, corrosion-resistant aluminum construction ensures long-term durability while simplifying handling and installation.
- 3. Excellent Adjustability** — Innovative adjustment mechanisms accommodate terrain variations and ensure precise array alignment with minimal effort.
- 4. Proven Performance** — Extensively tested and validated through thousands of installations worldwide, guaranteeing reliability and longevity.

TECHNICAL PARAMETER

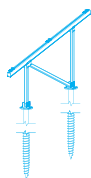
Material	Aluminium (6005 T5) Small parts: Stainless steel
Orientation	Landscape/Portrait
Recommended Ground Clearance	0.4m-1.5m
Inclination	0-45° degrees
Wind Speed	≤60m/s
Snow Load	≤1.5KN/m ²
Applicable Structure Types	A type, N type, VV type
Foundation	*Ground screw * Concrete foundation
Structure Standards	JIS 8955:2017; AS-NZS 1170; DIN 1055; ASCE 7-05



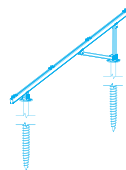
COMPONENTS



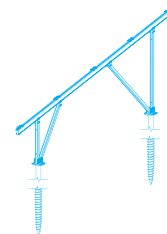
MORE STRUCTURE TYPES



N structure type



A structure type



VV structure type

There are several structure types available. Final solution will be based on site-specific conditions.