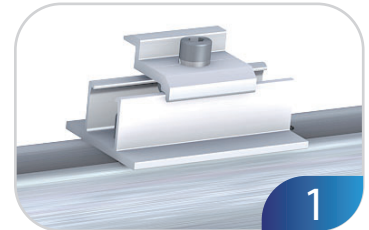
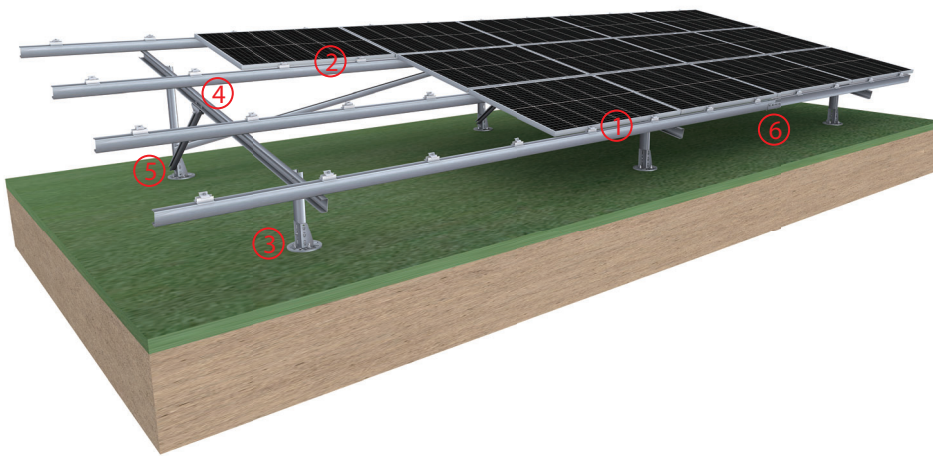


## TERRA ZAM STEEL GROUND MOUNT SYSTEM

Terra ZAM offers durability and efficiency for commercial and utility-scale projects. Made from zn-al-mg coated steel, it provides superior corrosion resistance and structural integrity. Its innovative panel clamp design reduces installation time and labor costs without sacrificing stability. Additionally, its advanced coating technology extends service life and minimizes maintenance needs, making Terra ZAM an ideal choice for robust and efficient solar mounting solutions.



## PRODUCT FEATURES

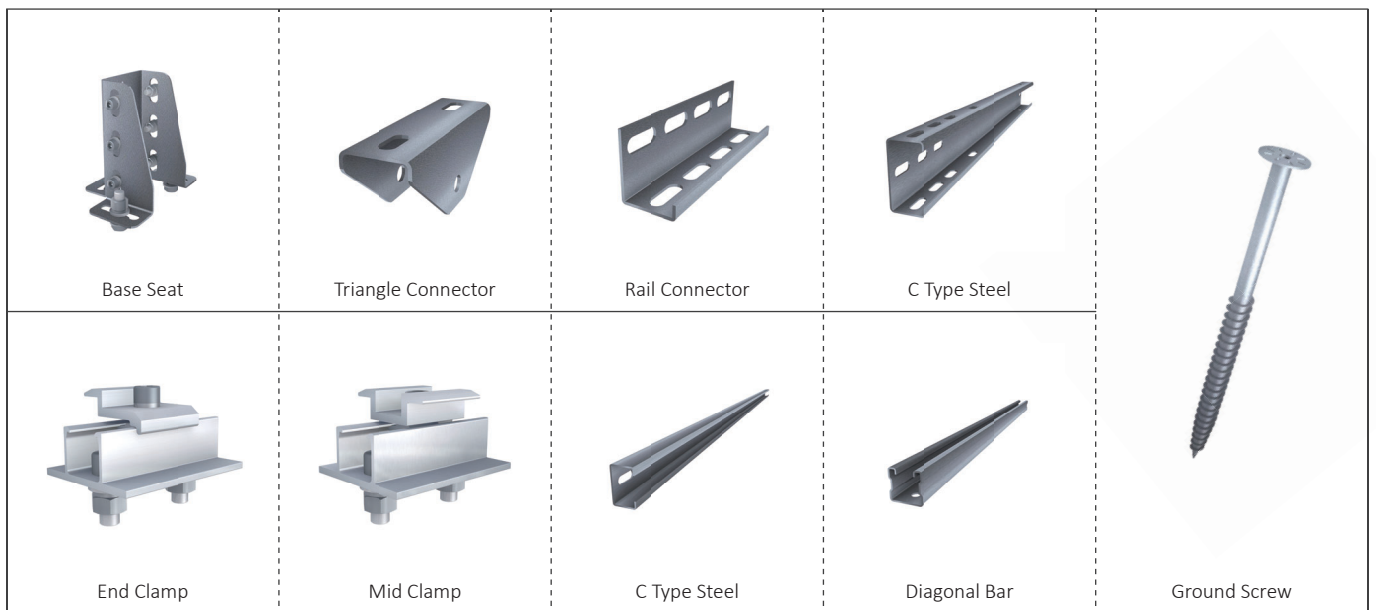
1. Streamlined panel mounting process reduces installation time by up to 30% compared to conventional systems.
2. ZAM, a good alternative to hot-dipped galvanized steel, offers better strength, same anti-corrosion but with lower cost.
3. Optimized material usage and efficient design deliver maximum value without compromising structural integrity.
4. The three-axis adjustable settings effectively compensate for any installation errors, ensuring a more accurate and reliable setup.

## TECHNICAL PARAMETER

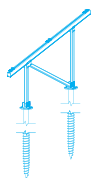
<b>Material</b>	Zn-Al-Mg Coated Steel Small parts:Stainless steel
<b>Orientation</b>	Landscape/Portrait
<b>Recommended Ground Clearance</b>	0.6m-1.5m
<b>Inclination</b>	0-45° degrees
<b>Wind Speed</b>	≤60m/s
<b>Snow Load</b>	≤1.5KN/m <sup>2</sup>
<b>Applicable Structure Types</b>	A type,N type, VV type
<b>Foundation</b>	* Drive piles into soil * Embedded ground screw * Concrete foundation
<b>Structure Standards</b>	JIS 8955:2017; AS-NZS 1170; DIN 1055; ASCE 7-05



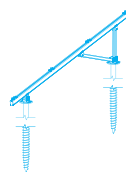
## COMPONENTS



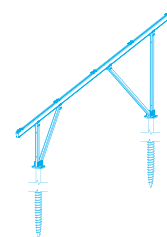
## MORE STRUCTURE TYPES



N structure type



A structure type



VV structure type

There are several structure types available. Final solution will be based on site-specific conditions.